



# Multi-Zone Controller

## INSTALLATION GUIDE



[www.aspectLED.com](http://www.aspectLED.com) | 888.503.1317 | [sales@aspectled.com](mailto:sales@aspectled.com)

For general information purposes only. Specifications, dimensions and construction not guaranteed and are subject to change without notice. Copyright © 2024 ASP Holdings, Inc. All rights reserved.

Have questions? Call 888-503-1317

# Product Overview

aspectLED's multi-zone line of color changing, color tuning, and dimming controllers give you complete control over the color, brightness, and tone of your 12VDC and 24VDC LED products. With handheld and wall mounted controller options, you can pick the style and form factor that fits your application perfectly.



## SAFETY AND WARNINGS

- Install in accordance with the National Electric Code, and all local regulations.
- This product is intended to be installed and serviced by a qualified licensed electrician.
- Only use with compatible LED fixtures, controls, and switches. Only use copper wiring.
- Ensure appropriate type and size wire is installed between driver, fixture, and any controls in between. When choosing wire, factor in voltage drop, amperage rating, and type (in-wall rated). Improper wire size or type could cause a fire or damage components.
- Do not install if product has any visible damage.
- Do not modify or disassemble this product beyond instructions or the warranty will be void.
- Use only non-dimming class 2 constant voltage LED power supply.

## THIS GUIDE APPLIES TO:

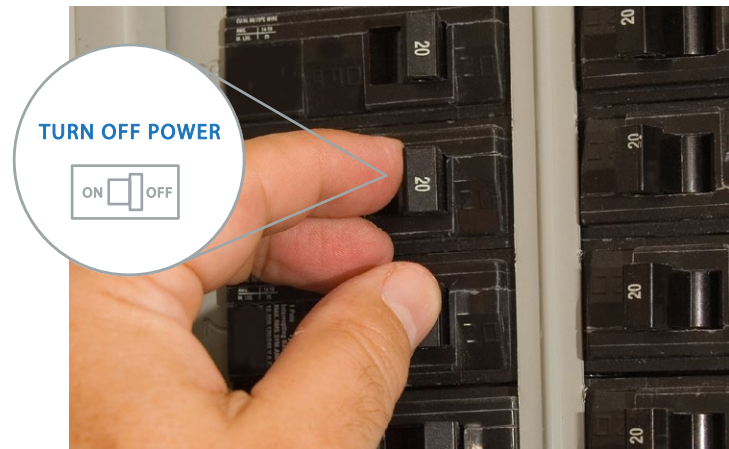
<b>AL-CTLR-RGBW-4CP</b> 4 channel LED controller base unit/ receiver	<b>AL-CTLR-RGBW-3ZRF-WMT</b> RGB+W 3-zone wall controller	<b>AL-CTLR-RGBW-4ZRF-WMT</b> RGB+W 4-zone handheld remote controller	<b>AL-CTLR-DIM-4ZRF-RMT</b> Single color dimming 4-zone handheld remote controller	<b>AL-CTLR-DIM-4ZRF-WMT</b> Single color dimming 4-zone wall mount controller	<b>AL-CTLR-CCT-4ZRF-RMT</b> Color tuning 4-zone handheld remote controller

## Before you begin

We know how boring it can be to read instructions, so we'll keep this installation guide as short and sweet as possible. Before you begin with your installation, be sure to fully read these instructions. They contain many useful tips and pointers that will help to ensure a perfect installation, save you time, and ensure your safety.

It is important that you install this product (and all other electrical products) in accordance with the National Electric Code (NEC) and all applicable local building and electrical codes for your area. If you are unfamiliar with the NEC, your local building/electrical codes, and/or the proper installation methods for electrical devices, you should hire a qualified and licensed electrician to do the work for you.

**Before beginning any electrical work, always disconnect power at the fuse or circuit breaker.**

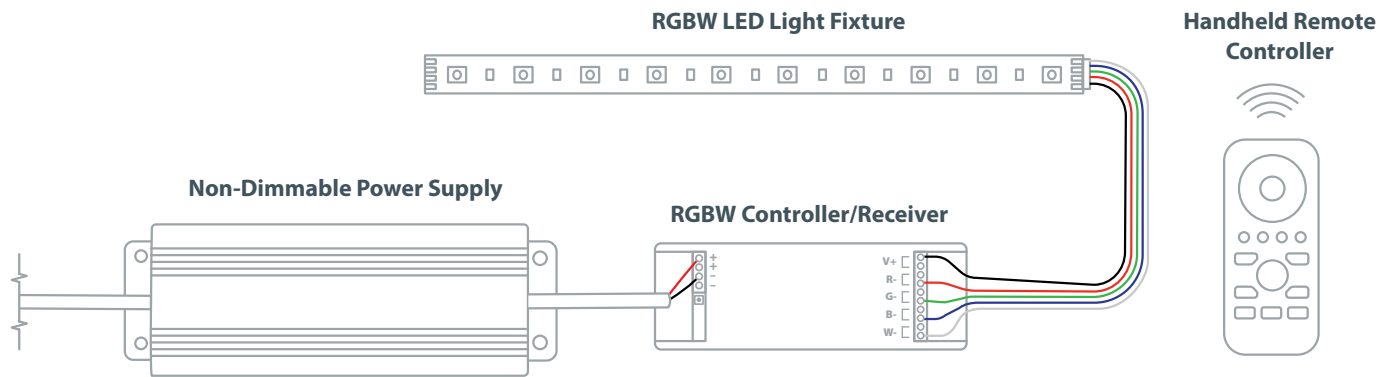


## Important considerations

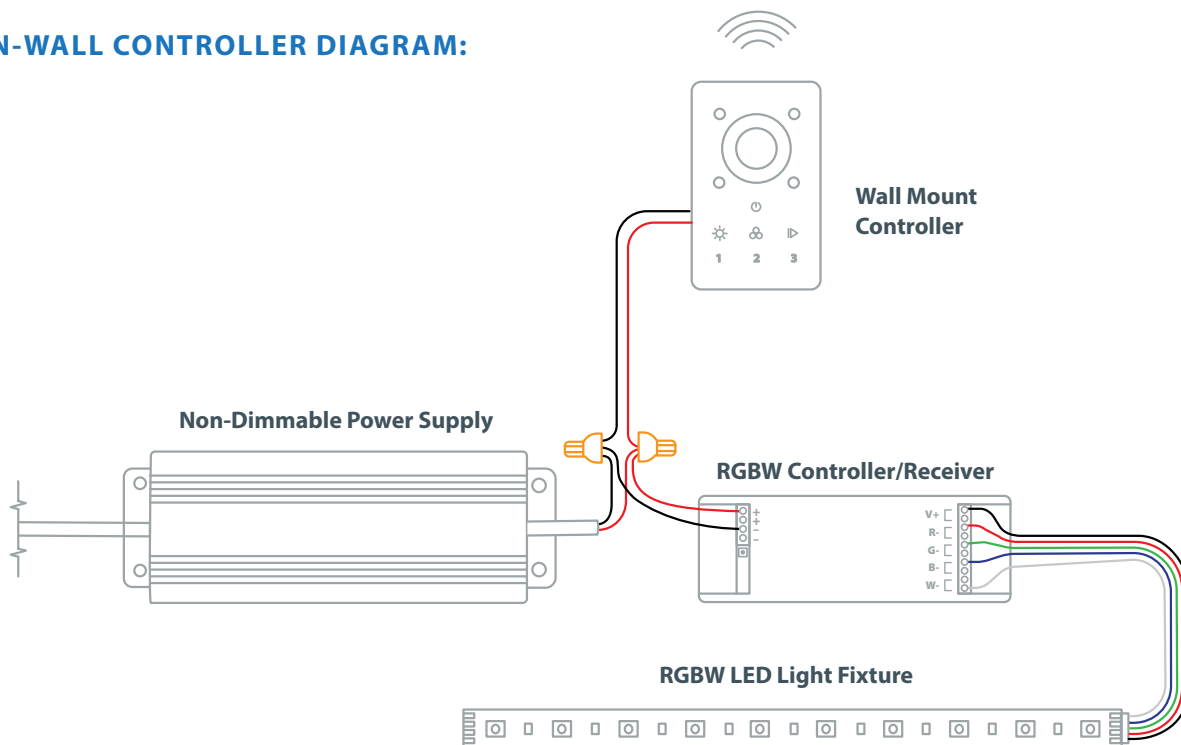
- This product is only suitable for dry locations. Avoid direct sun light.
- Use of accessories not recommended by aspectLED may cause an unsafe condition and void warranty.
- Always consult a wire gauge chart to determine the correct size wire for your application. Wire gauge is dependent on voltage drop, amperage rating, and environment. Incorrect wire selection could overheat systems and cause a fire.
- These controllers are low voltage and require a step down transformer.
- Keep finger off the touch ring when installing batteries to improve sensitivity.
- Do not use the controller in a concrete or metal-heavy area or in a strong electromagnetic field or range of remote may be considerably reduced.

# System diagrams

## HANDHELD REMOTE DIAGRAM:



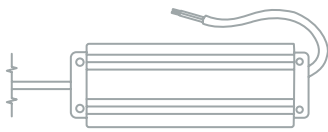
## IN-WALL CONTROLLER DIAGRAM:



# Installation

- 1 Turn off power at breaker.
- 2 Identify the location to mount your light fixture, your power supply and controller/receiver, and if applicable, your wall remote controller.

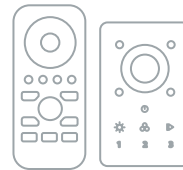
**12VDC or 24VDC  
Non-Dimmable Power Supply**  
*(don't worry you'll still be able to dim)*



**Controller/Receiver  
AL-CTLR-RGBW-4CP**  
*(one for each zone)*



**Handheld remote or wall  
mount multi-zone controller**  
*(listed on page 1)*

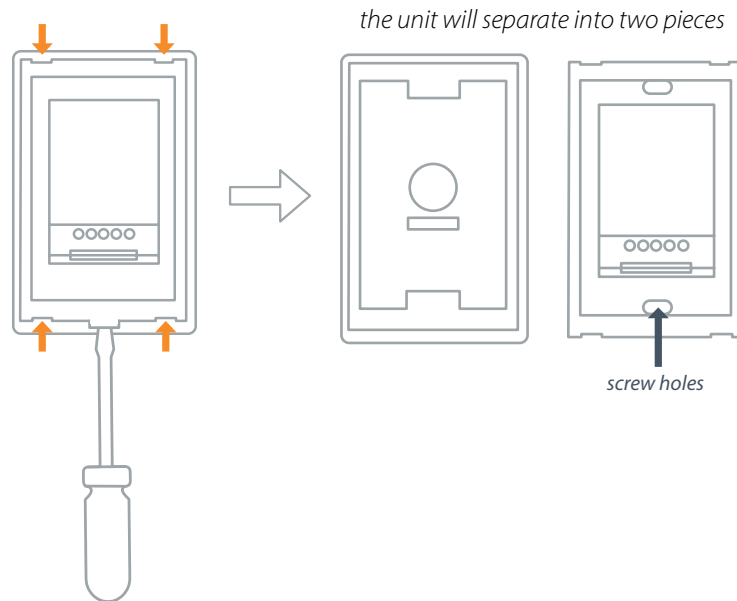


**12VDC or 24VDC  
light fixture(s)**

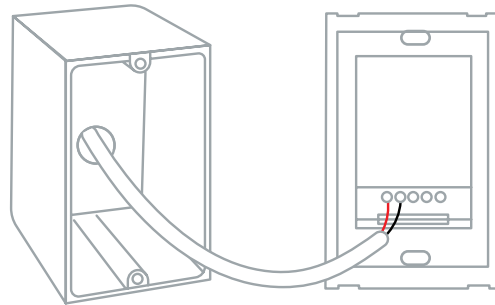


- 3 Install your light fixture and run the wires to where you're locating your power supply and controller/receiver.
- 4 Remove the covers from the controller/receiver and make your output wiring connections.
  - a. For **RGBW**, white should go to W- (CH4), blue to B- (CH3), green to G- (CH2), red to R- (CH1), and black to V+.
  - b. For **single color dimming**, your positive wire should go to V+, and negative to any of the 4 negative terminals.
  - c. For **color tuning**, your positive wire should go to V+, yellow wire to WW- (CH1 or 3), and white to CW-(CH2 or 4).
- 5 Connect your positive and negative input wiring connections from the power supply to the controller/receiver.
- 6 If you're going to use a handheld remote controller, skip to step 11. For wall mount controllers, continue.
- 7 Cut in and mount your wall box. It will need to be a single gang stand-alone wall box with about an inch of clearance on each side.

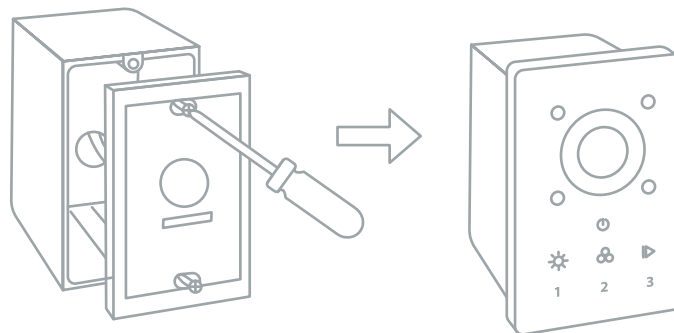
- 8** Carefully remove the faceplate of the controller from the body of the controller by gently prying at the slots on the rear side at the top, bottom and center of the unit with a screw driver.




- 9** Make a low voltage wire run from your power supply directly through your wall box. Insert the positive and negative wires from the power supply into the positive and negative terminals on the back of the wall controller. Tighten the terminal screws.

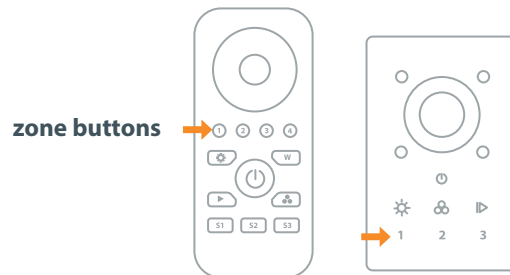


- 10** Screw the controller into the wall box, and pop the front plate back on, making sure the pins line up correctly.

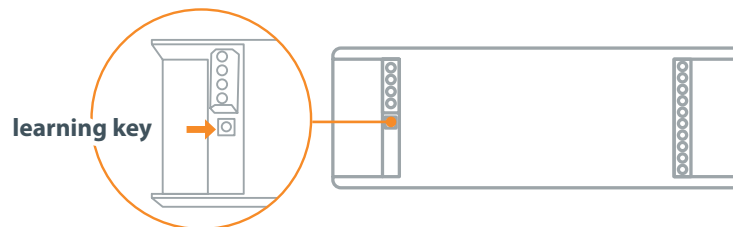


**11 Turn on power and plug in the power supply****12 Pair the receiver to the remote or wall unit.**

- a. Turn on the controller . On the handheld remotes, the light will turn on. On the wall mount controllers, the light will turn from red to blue.
- b. Press the zone button on the remote for the zone you wish to associate. If only 1 zone, choose zone 1.



- c. Press and release the learning key on the controller/receiver



- d. Immediately touch the color wheel (dimming spectrum on dimming controllers).
- e. The lights should flash, and our controller should be paired. If not, skip to troubleshooting.
- f. Repeat this process for each subsequent zone if applicable.

**13 Congrats! Replace the controller/receiver's terminal covers and you are all set!**



# Wireless RGBW Multi-Zone Handheld Remote Controller

## REMOTE OPERATION





# Troubleshooting

## My remote won't turn on

- Your remote needs batteries.
- Your wall mount controller has a poor connection or reversed polarity at the power supply or at the wall controller. Try reinserting or swapping positive and negative wires.
- The 12VDC or 24VDC power supply feeding your wall controller is off or connected improperly.

## My lights won't turn on or some colors don't work

- You've got a poor connection or reversed polarity either between your power supply and receiver, or receiver to light fixture(s). Most likely, the V+ wire.
- Your power supply is off or wired improperly.

## My controller won't pair with the receiver

- Try clearing the memory of the receiver by pressing and holding the learning key for 5-10 seconds. Then restart the pairing process.
- Make sure you're touching the color wheel within seconds of pressing and releasing the learning key.
- Make sure the remote is on and in the right zone before pressing the learning key. The handheld remotes turn off automatically after a short period of inactivity to save battery.

## My controller is on and paired, but not all of the colors work

- You've got a poor, insecure, or incorrect connection between the light fixtures and receiver, but only on whichever color is not working or the V+ wire is incorrectly reversed.

## My controller is on, paired, and working, but the colors don't correspond correctly.

- One or more colors may be in the incorrect location on your controller or at your light fixture.