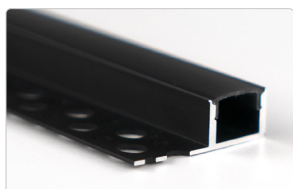
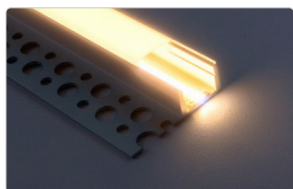
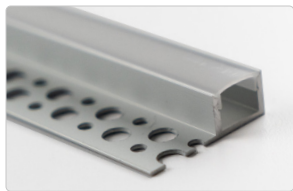


Tile-In LED Edge Profile Channel, Narrow

AL-TRK-MUD1-N

Single-Wing Aluminum Mounting Channel

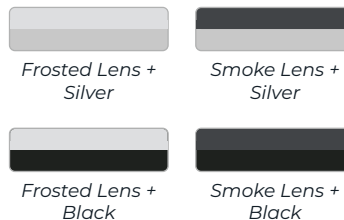


DESCRIPTION

The Tile-In LED Edge Profile is an aluminum channel designed to seamlessly integrate strip lighting into tile or masonry surfaces. With a depth of 3/8", it's perfect for use with porcelain or ceramic tile, thin brick, or even slim-cut stone.

It fits strip lights up to 12mm wide and adds striking edge lighting to backsplashes, wainscots, or material transitions—bringing a bold, modern touch to your space.

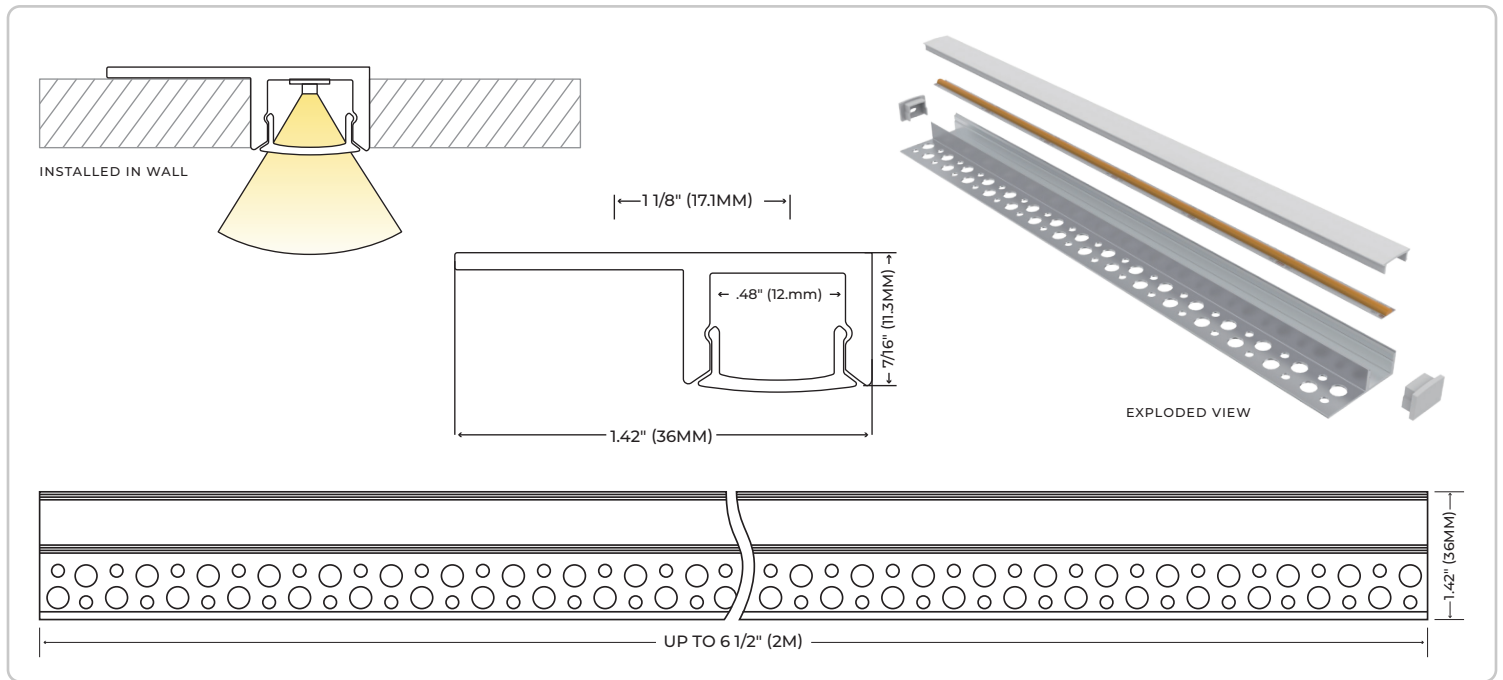
COLOR VARIETIES



PRODUCT SPECIFICATION CHART

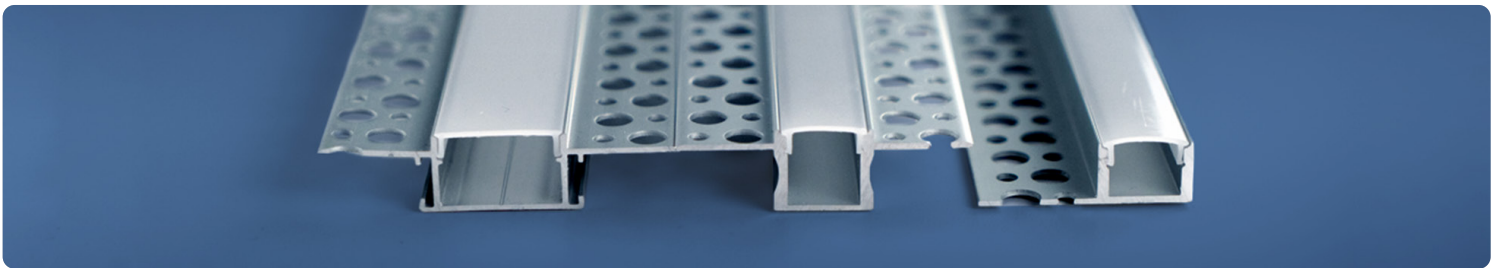
PHYSICAL		DIFFUSING LENS	
Length	Up to 6 1/2' (2m)	Lens Options	Frosted, Smoke
Width	1.42" (62mm)	Lens Material	Polycarbonate
Depth	.43" (14mm)	INSTALLATION	
Weight	Up to .93 lbs	Routing Width	.67" or 11/16" (17mm)
Channel Material	Aluminum	WARRANTY	
WHAT'S INCLUDED		Warranty	1 Year
Single-Winged, Narrow Mud-In LED Channel		STRIP LIGHT COMPATIBILITY	
Protective Polycarbonate Diffusing Lens		All aspectLED indoor-rated (IP20) strip light products – or other strip light products 12mm wide or less.	

TECHNICAL DRAWINGS




SKU BUILDER

AL-TRK-MUD1-N			
TILE-IN LED EDGE PROFILE CHANNEL, NARROW	LENS/CHANNEL COLOR	CHANNEL LENGTH	QUANTITY
	<i>SFST – Frosted Lens, Silver Finish</i> <i>SSMK – Smoke Lens, Silver Finish</i> <i>BFST – Frosted Lens, Black Finish</i> <i>BSMK – Smoke Lens, Black Finish</i>	<i>1M – 3.3 Feet</i> <i>2M – 6.5 Feet</i>	<i>Blank – Single Piece</i> <i>5PK – 5 Pack</i> <i>10PK – 10Pack</i>



Find It Online!
Scan the link to check out our online product pages and discover more about your product.



For general information purposes only. Specifications, dimensions and construction not guaranteed and are subject to change without notice.