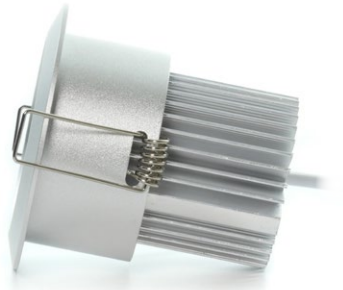


3.15" LED RECESSED LIGHT

Ultra Bright (9W)

MODEL: AL-RL-D-315-U



Description

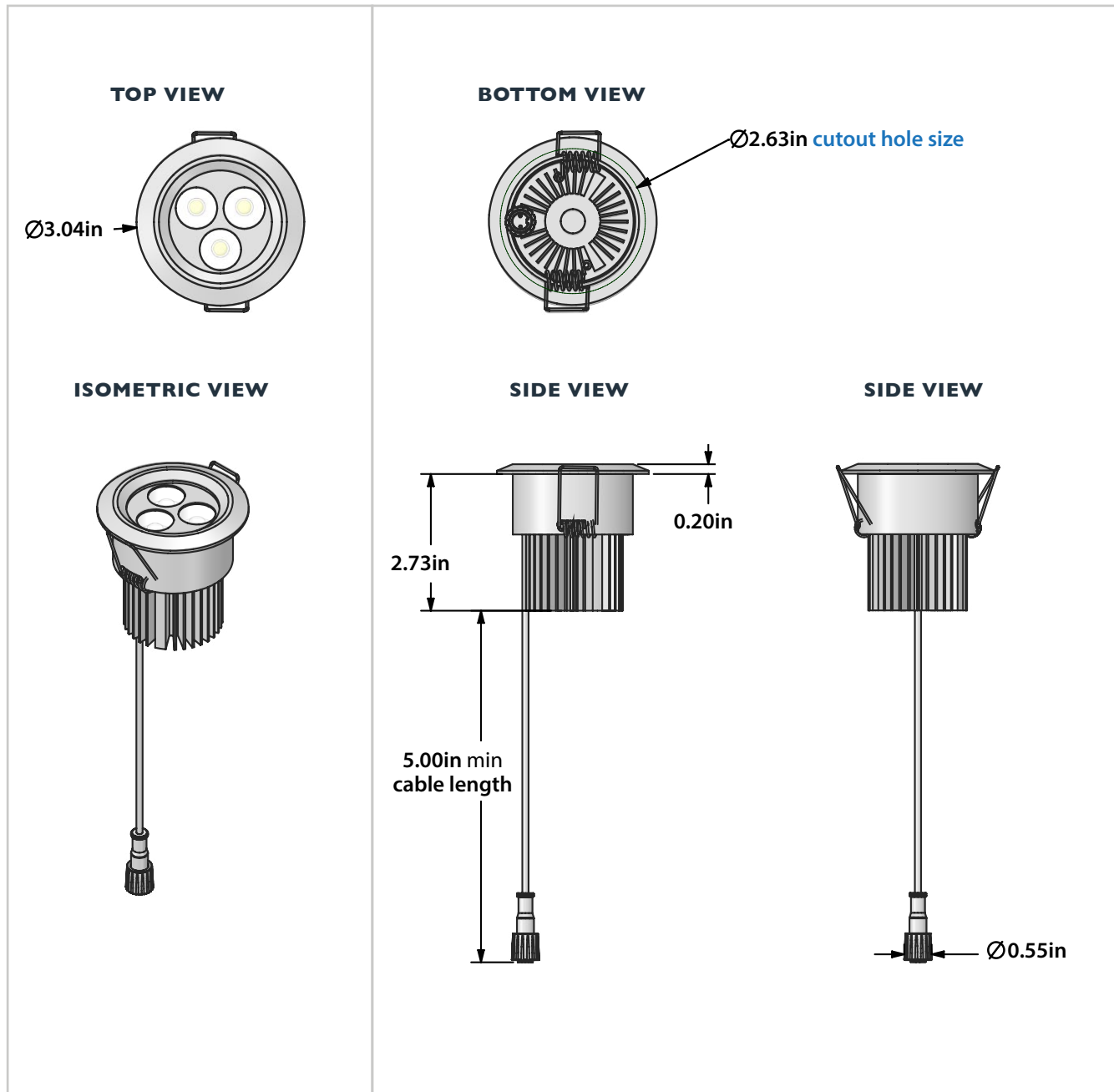
At under 3" tall, our 3.15" round LED recessed light can fit into tight spaces that a traditional recessed can light can't, such as ceilings with ductwork/piping/obstructions, hot-roof ceilings with limited vertical clearance, and tight soffits. The LED face of this fixture is fixed and points straight downward. Since it is not adjustable, this fixture is best suited for flat ceilings.

[Learn more](#)

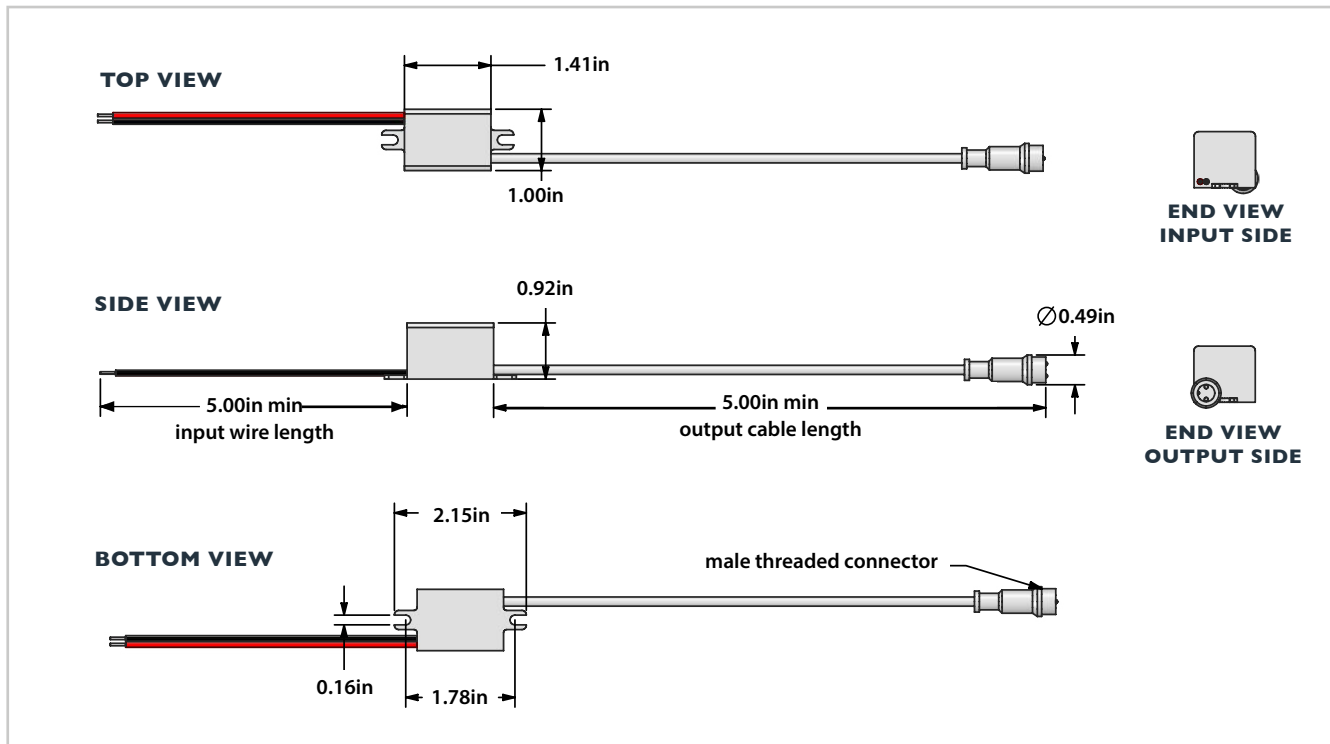


	12VDC	24VDC	120VAC
Light Fixture Dimensions	3" (77mm) diameter 2-3/4" (70mm) tall	3" (77mm) diameter 2-3/4" (70mm) tall	3" (77mm) diameter 2-3/4" (70mm) tall
External LED Driver Dimensions	1-7/16" (36mm) long 1" (25.5mm) wide 15/16" (23mm) tall	1-7/16" (36mm) long 1" (25.5mm) wide 15/16" (23mm) tall	5" (127mm) long 2-1/2" (64mm) wide 1-1/2" (38mm) tall
Cut-Out Hole Size	2-5/8" (67mm) diameter	2-5/8" (67mm) diameter	2-13/16" (71mm) diameter
LED Driver Input Voltage	12VDC	24VDC	120VAC
Dimmable	Yes	Yes	Yes
Nominal Power Consumption	9 Watts (3 - 3 watt LEDs)	9 Watts (3 - 3 watt LEDs)	9 Watts (3 - 3 watt LEDs)
LED Type	High Power 3W LED Chips	High Power 3W LED Chips	High Power 3W LED Chips
Max Delivered Scotopic Luminous Flux	1,195 Lumens (varies by LED color)	1,195 Lumens (varies by LED color)	1,195 Lumens (varies by LED color)
Max Delivered Photopic Luminous Flux	566 Lumens (varies by LED color)	566 Lumens (varies by LED color)	566 Lumens (varies by LED color)
Average Continuous Power Consumption	6.096 Watts	6.096 Watts	6.096 Watts
Luminous Efficiency (Lumens per Watt)	92.84 Lumens/Watt (varies by LED color)	92.84 Lumens/Watt (varies by LED color)	92.84 Lumens/Watt (varies by LED color)
Fixture Material	High Performance Aluminum Alloy	High Performance Aluminum Alloy	High Performance Aluminum Alloy
Weight	0.5 lbs	0.5 lbs	0.7 lbs
Estimated Lifespan	Up to 50,000 hours	Up to 50,000 hours	Up to 50,000 hours
Warranty	3 Years	3 Years	3 Years
IC Rated for Insulation Contact	Yes	Yes	Yes
Suitable Uses	Dry, Damp or Wet Locations	Dry, Damp or Wet Locations	Dry, Damp or Wet Locations
Compatible Power Supplies	Dimmable Power Supplies, Non-Dimmable Power Supplies (Never use with MLV power supplies!)	Dimmable Power Supplies, Non-Dimmable Power Supplies (Never use with MLV power supplies!)	No Power Supply Needed (Driver included with light)
Standards/Certifications	UL Listed, cUL Listed, RoHS	UL Listed, cUL Listed, RoHS	UL Listed, cUL Listed, RoHS

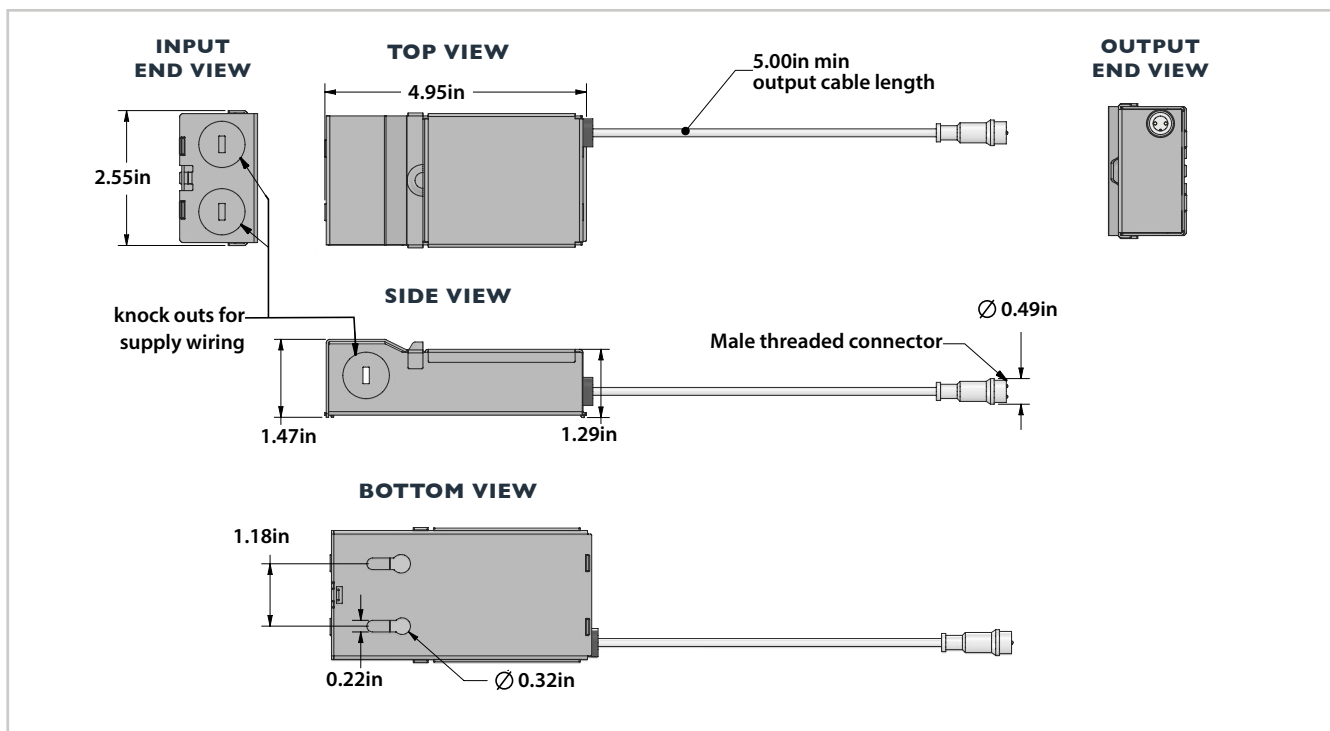
Light Fixture Dimensions



12VDC and 24VDC Driver Dimensions



120 VAC Driver Dimensions



3.15" LED RECESSED LIGHT - ULTRA BRIGHT (9W)
MODEL:AL-RL-D-315-U

Photometrics

Beam Dia at 50% CBCP (inches)	Field Dia at 10% CBCP (inches)	Foot-candles at center beam	Lux at center beam	Distance from fixture
15° / 60°	15° / 60°	15° / 60°	15° / 60°	
7.6" / 10.3"	14.1" / 14.0"	906.3 / 419.5	9755.3 / 4515.4	2ft
11.3" / 16.0"	20.0" / 29.5"	99.6 / 208.0	4301.2 / 2238.9	3ft
12.5" / 21.0"	26.0" / 44.5"	220.4 / 106.0	2372.3 / 1140.9	4ft
17.5" / 30.0"	31.5" / 57.5"	142.7 / 65.3	1536.0 / 702.9	5ft
20.0" / 36.5"	37.5" / 66.5"	97.0 / 46.3	1044.1 / 498.4	6ft
26.0" / 45.5"	49.5" / 104.0"	54.1 / 24.8	582.3 / 266.9	8ft

Light measurements may vary by color temperature and many other factors. The beam angle is the angle at which light exits your light fixture. The larger the number, the wider the beam of light that is emitted from the light fixture. This chart shows a 15 and 60 degree beam angle option.

Accessories

**Rough-In Plate/Bracket for Round/
Modern Series Recessed LED Lights**
 SKU: AL-RL-RP-315



60 Watt LED Power Supply
 SKU: AL-PS-W-60



**Extension Cable for
Recessed LED Light**
 SKU: AL-RL-EXT



**60W Dimmable LED
Power Supply**
 SKU: AL-PS-W-D-60-24V



SKU Builder

MODEL #:

AL-RL-D-315-U

VOLTAGE:

12VDC
24VDC
120VAC

LED LIGHT COLOR:

WW - Warm White
CW - Cool White
DW - DayWhite
B - Blue
G - Green
R - Red
Y - Yellow/Amber

TRIM COLOR:

SN - Satin Nickel
WT - White
DB - Dark Bronze
BK - Black
BS - Brass
CH - Chrome

BEAM ANGLE:

60 - Flood Light (60°)
15 - Spot Light (15°)