

MAX ADJUSTMENT ANGLE  
SCALE 1:2

<p>UNLESS OTHERWISE SPECIFIED, DIMENSIONS ARE IN INCHES</p> <p>GENERAL TOLERANCES .XX = ±.05 .XXX = ±.005 .XXXX = ±.0005 ANGULAR = ±1° FRACTIONAL = ±1/16</p> <p>DO NOT SCALE DRAWING</p> <p><small>CONFIDENTIAL. Copyright © 2025 ASP Holdings, Inc. All Rights Reserved. All specifications subject to change at anytime without prior notice.</small></p> <p><small>The products shown herein incorporate features and technologies that are the sole intellectual property of ASP Holdings, Inc.</small></p>			<p>PRODUCT DESCRIPTION</p> <p><b>3.5" RGB LED RECESSED LIGHT - ULTRA BRIGHT (9W)</b></p>						
	<p>THIRD ANGLE PROJECTION</p>		DWG SIZE	SKU					
	<p>DRAWN BY</p> <p>EDGAR V</p>		DATE <p>04/30/2025</p>	<b>B</b>	AL-RL-S-35-U-RGB				
	ORDER	----	--/--/----	SCALE	1:1	VERSION	SHEET	1 of 2	REV.

4

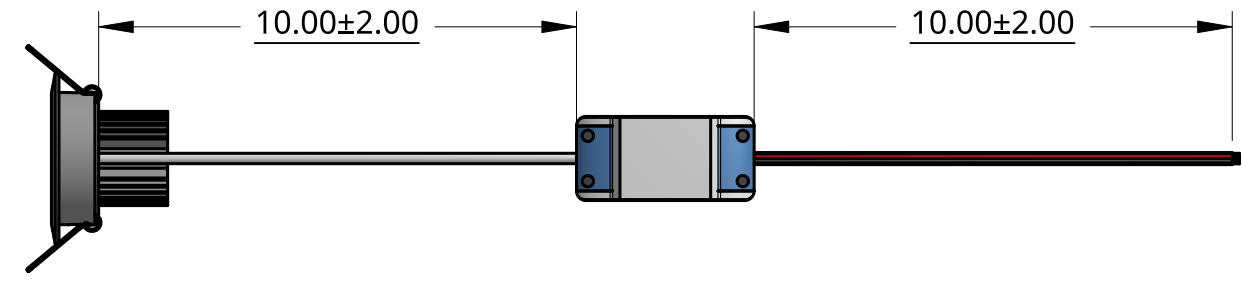
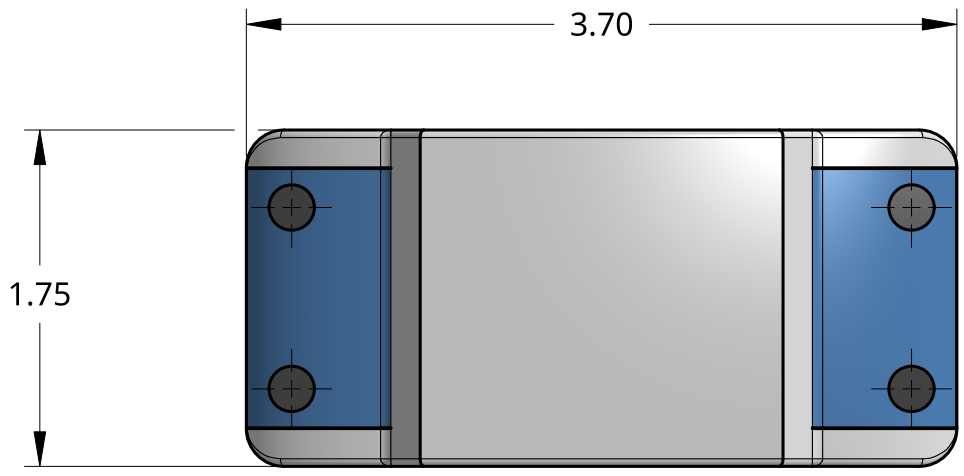
3

2

1

D

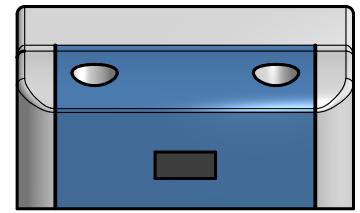
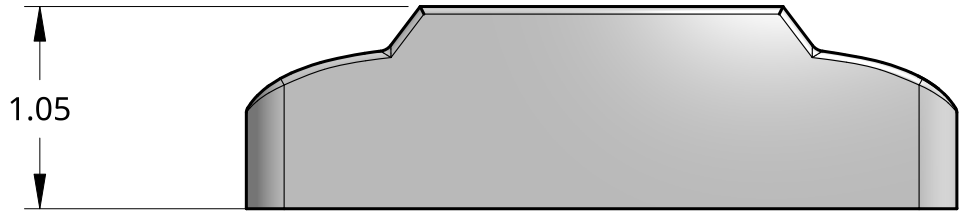
D



WIRE LENGTHS  
SCALE 1:4

C

C



B

B

A

A

NOTES:  
1 - THERE ARE 2 SETS OF INPUT WIRES: 18AWG (RED/BLACK) FOR POWER & 22AWG (BLACK/RED/GREEN/BLUE) FOR SIGNAL. THE 18AWG SET CONNECTS DIRECTLY TO LOW VOLTAGE POWER (RED = V+, BLACK = V-). THE 22AWG SET CONNECTS TO OUTPUT OF LED CONTROLLER TO ALLOW COLOR CHANGING (BLACK = V+). BOTH WIRE SETS MUST BE USED TO PROPERLY POWER AND CONTROL THIS FIXTURE

UNLESS OTHERWISE SPECIFIED, DIMENSIONS ARE IN INCHES  GENERAL TOLERANCES .XX = ±.05 .XXX = ±.005 .XXXX = ±.0005 ANGULAR = ±1° FRACTIONAL = ±1/16			PRODUCT DESCRIPTION 3.5" RGB LED RECESSED LIGHT - ULTRA BRIGHT (9W) DRIVER & WIRE DETAILS			
	THIRD ANGLE PROJECTION		DWG SIZE	SKU	AL-RL-S-35-U-RGB	
DO NOT SCALE DRAWING	NAME	DATE	SCALE	VERSION	SHEET	REV.
<small>CONFIDENTIAL. Copyright © 2025 ASP Holdings, Inc. All Rights Reserved. All specifications subject to change at anytime without prior notice.</small> <small>The products shown herein incorporate features and technologies that are the sole intellectual property of ASP Holdings, Inc.</small>	DRAWN BY	EDGAR V				
	ORDER	----	1:1			

4

3

2

1