



Wireless Dynamic White Color Tuning Multi-Zone LED Handheld Remote Controller

AL-CTLR-CCT-4ZRF-RMT

IMPORTANT: Read All Instructions Prior to Installation

Product Data

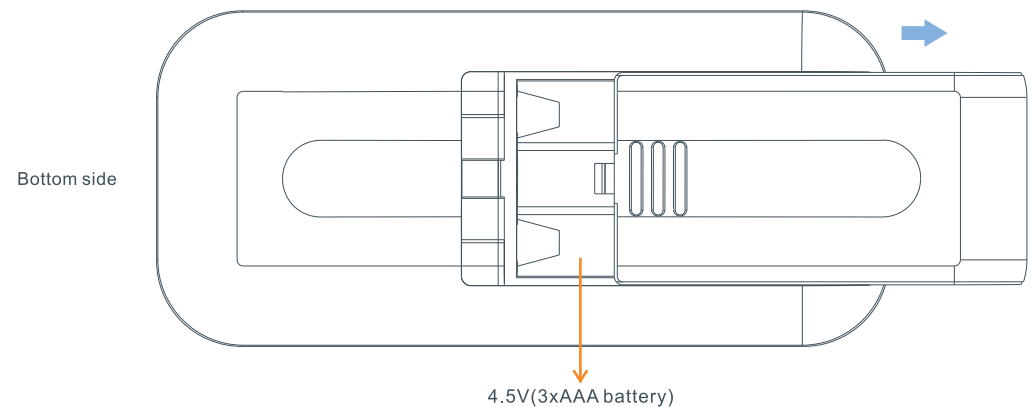
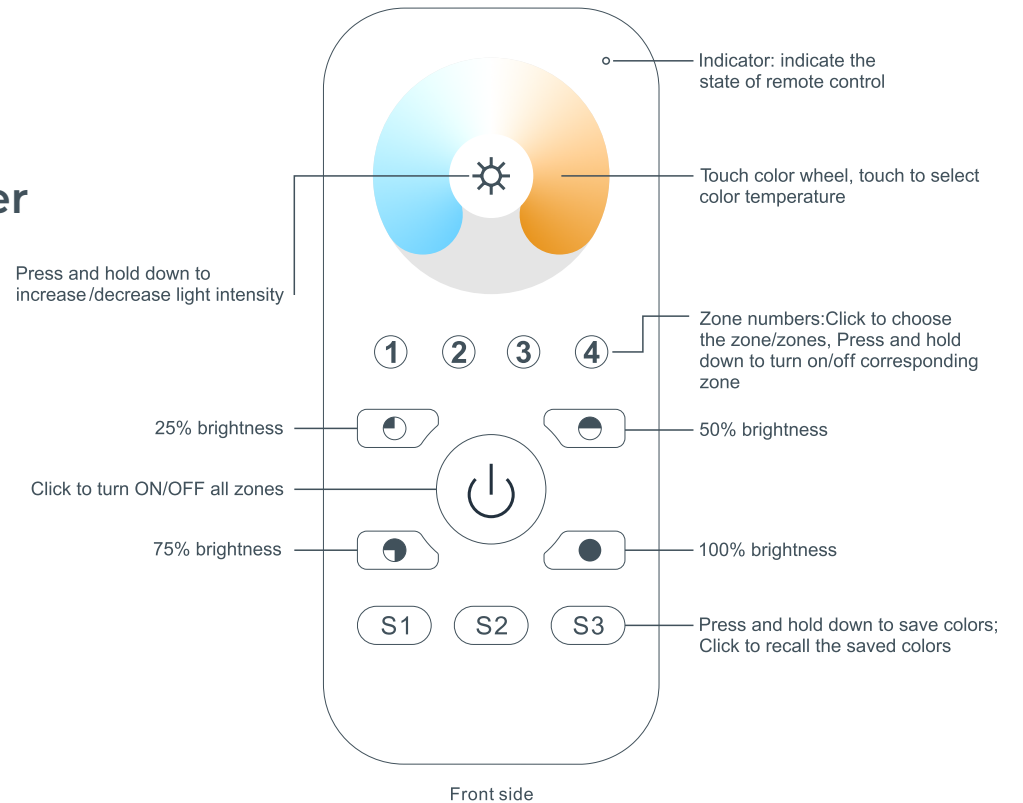
Output	RF Signal
Operation Frequency	869.5/916.5/434MHz
Power Supply	4.5V (3xAAA Battery)
Operating Temp.	0 – 40°C
Relative Humidity	8% to 80%
Dimensions	120mm X 55mm X 17mm
Waterproof Grade	IP20 Non-Waterproof

Safety Warning

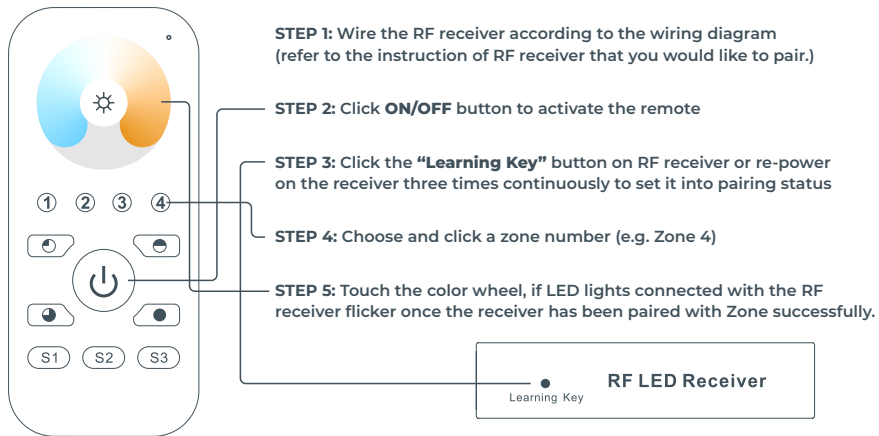
This device contains AAA batteries that must be stored and disposed of properly. Follow local guidelines for battery disposal or recycling. *DO NOT expose this device to moisture.*

Device Features

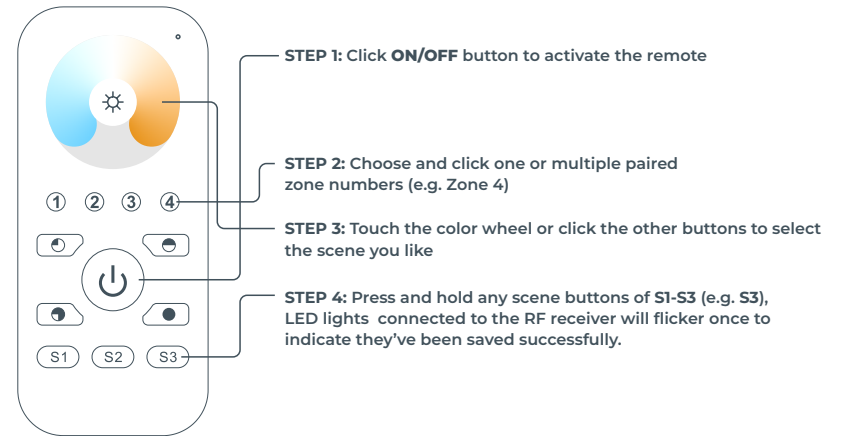
- Control 4 zones of RF receivers separately
- CCT Color Controller
- Highly sensitive, stable, fast, & precise color control
- Compatible with all universal series RF receivers
- 1 receiver can be paired by max. 8 different remote controls



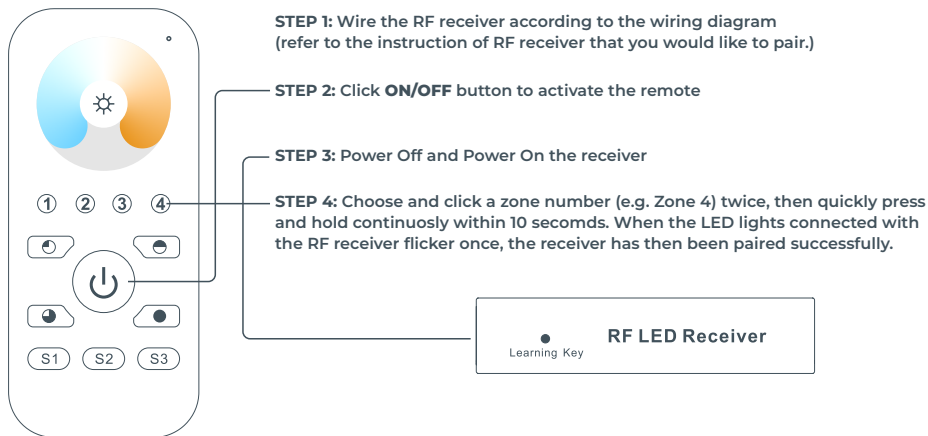
Pair with RF receiver (Method 1)



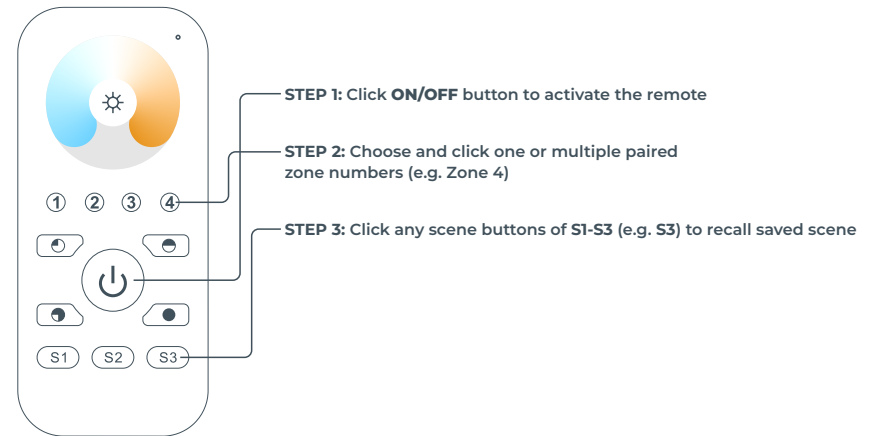
Save Color/Scene/Mode



Pair with RF receiver (Method 2)



Recall the Saved Colors/Scenes



If you use multiple receivers, you have two options:

Option 1: Have all the receivers in the same zone



Zone 1



RF remote

Option 2: Have each receiver in a different zone



Zone 1



Zone 2



Zone 3



RF remote