



# Wireless RF Dimming Single Color Multi-Zone LED Handheld Remote Controller

## AL-CTRL-DIM-4ZRF-RMT

**IMPORTANT: Read All Instructions Prior to Installation**

### Product Data

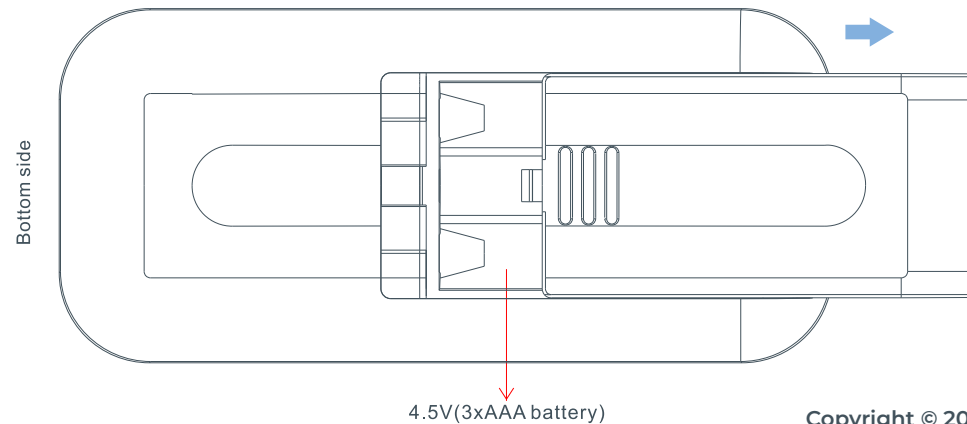
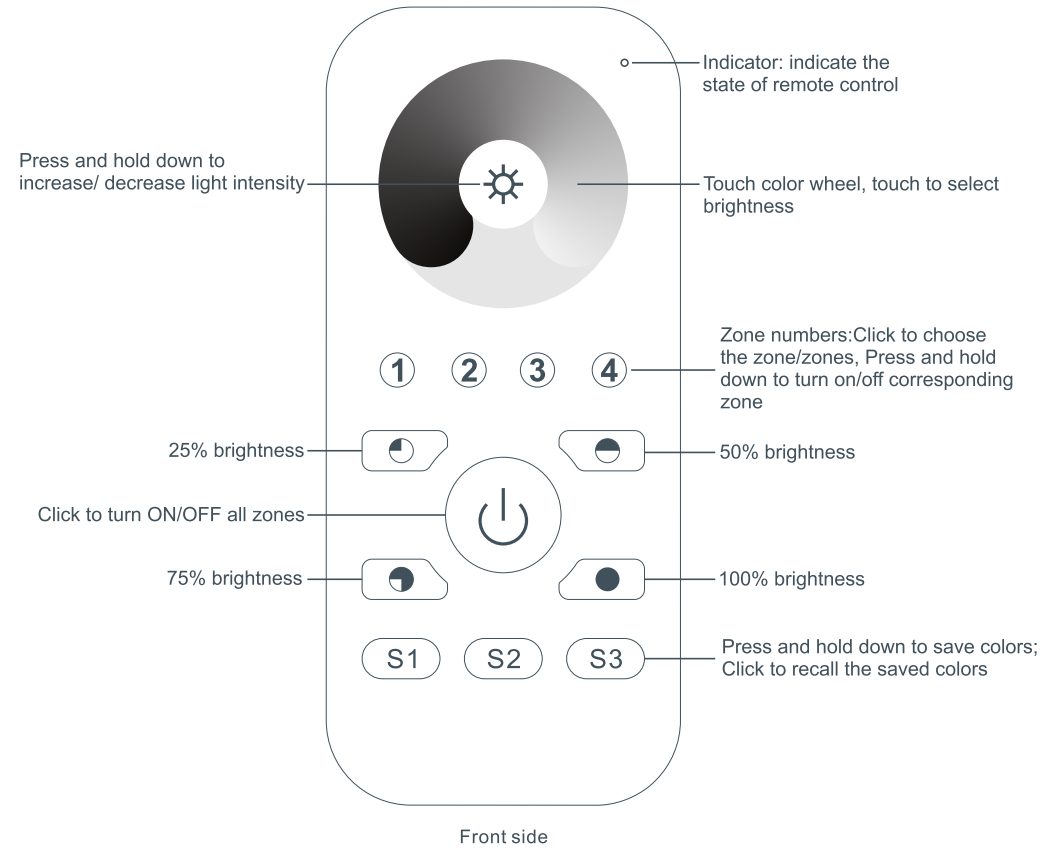
|                     |                      |
|---------------------|----------------------|
| Output              | RF Signal            |
| Operation Frequency | 869.5/916.5/434MHz   |
| Power Supply        | 4.5V (3xAAA Battery) |
| Operating Temp.     | 0 – 40°C             |
| Relative Humidity   | 8% to 80%            |
| Dimensions          | 120mm X 55mm X 17mm  |
| Waterproof Grade    | IP20 Non-Waterproof  |

### Safety Warning

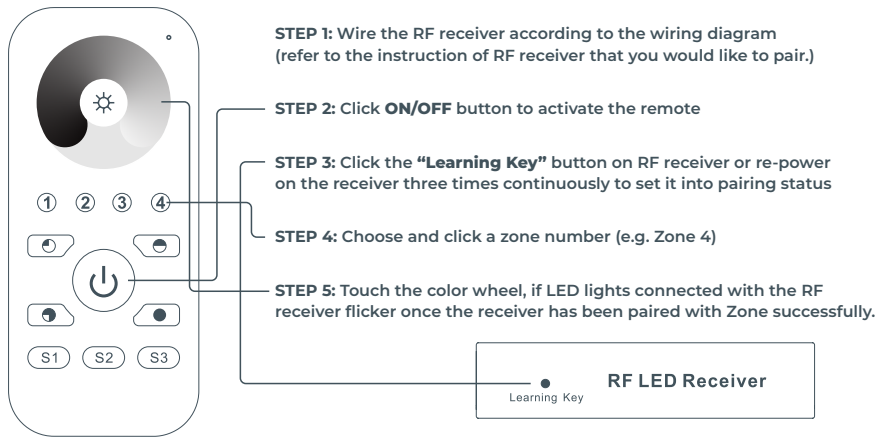
This device contains AAA batteries that must be stored and disposed of properly. Follow local guidelines for battery disposal or recycling. *DO NOT expose this device to moisture.*

### Device Features

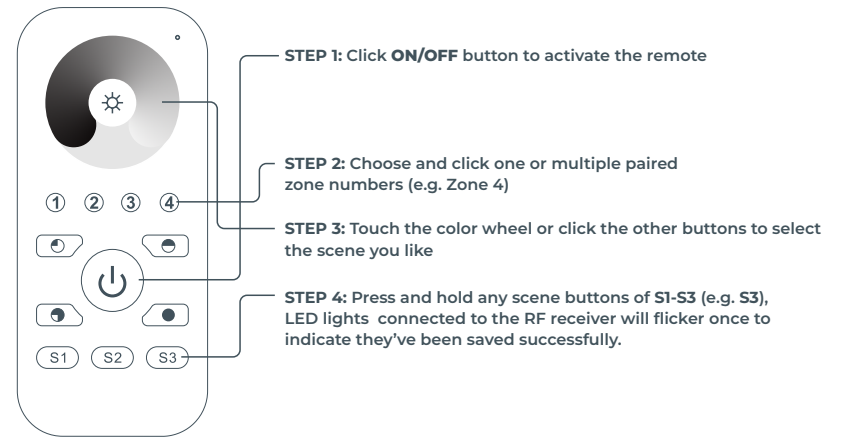
- Control 4 zones of RF receivers
- Single Color Controller
- Highly sensitive, stable, fast, & precise color control
- Compatible with all universal series RF receivers
- 1 receiver can be paired by max. 8 different remote controls



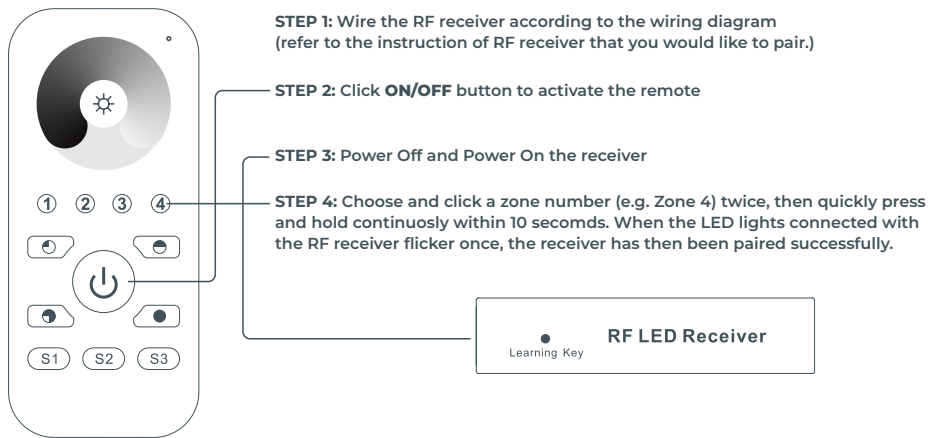
### Pair with RF receiver (Method 1)



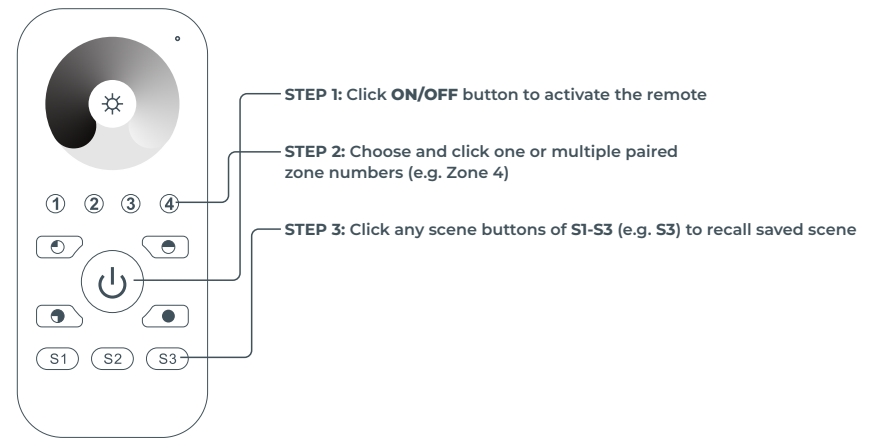
### Save Color/Scene/Mode



### Pair with RF receiver (Method 2)



### Recall the Saved Colors/Scenes

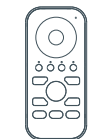


### If you use multiple receivers, you have two options:

Option 1: Have all the receivers in the same zone



Zone 1



RF remote

Option 2: Have each receiver in a different zone



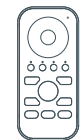
Zone 1



Zone 2



Zone 3



RF remote