



# Remote Wireless RGBCCT Multi-Zone LED Handheld Remote Controller AL-CTRL-RGBCCT-4ZRF-RMT

**IMPORTANT: Read All Instructions Prior to Installation**

## Product Data

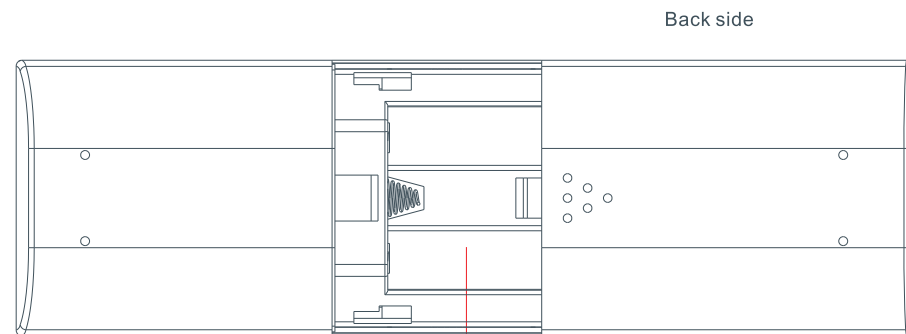
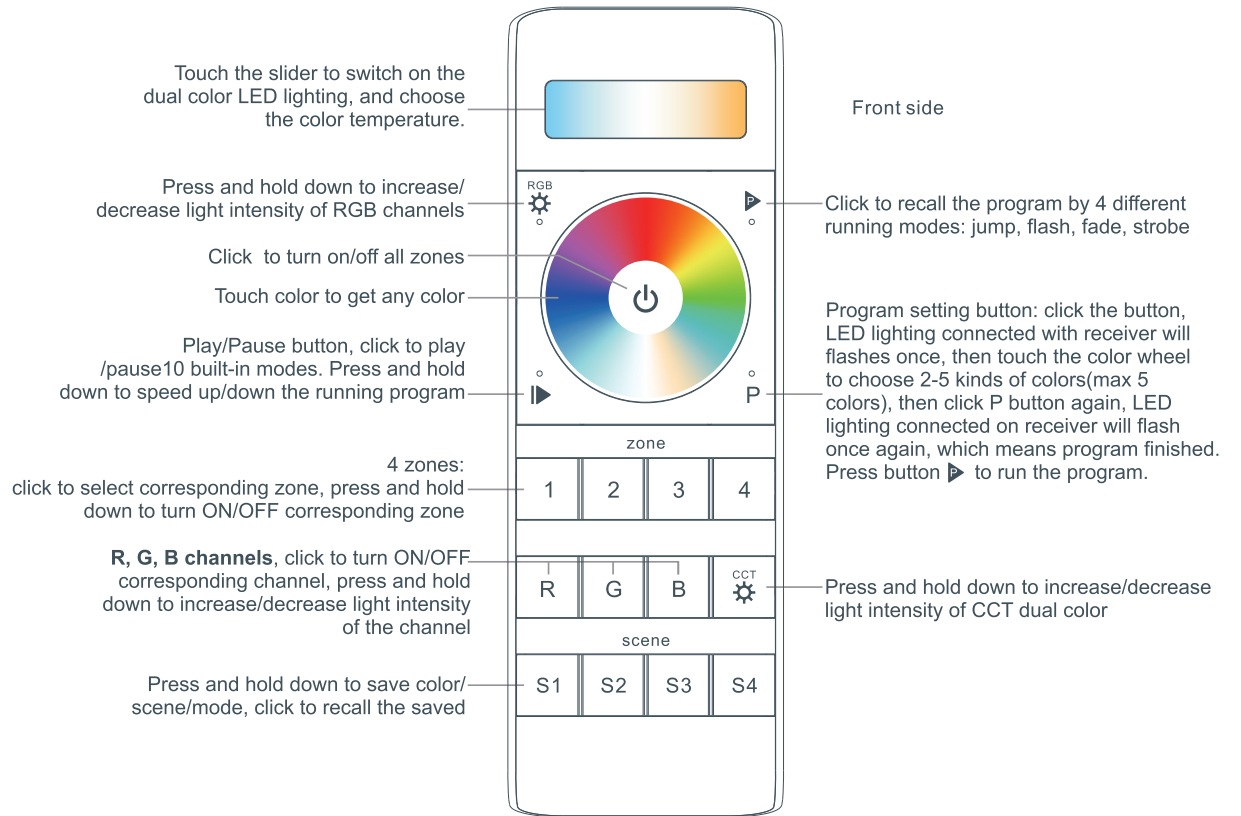
Output	RF Signal
Operation Frequency	869.5/916.5/434MHz
Power Supply	4.5V (3xAAA Battery)
Operating Temp.	0 – 40°C
Relative Humidity	8% to 80%
Dimensions	153mm X 52mm X 19mm
Waterproof Grade	IP20 Non-Waterproof

## Safety Warning

This device contains AAA batteries that must be stored and disposed of properly. Follow local guidelines for battery disposal or recycling. *DO NOT expose this device to moisture.*

## Device Features

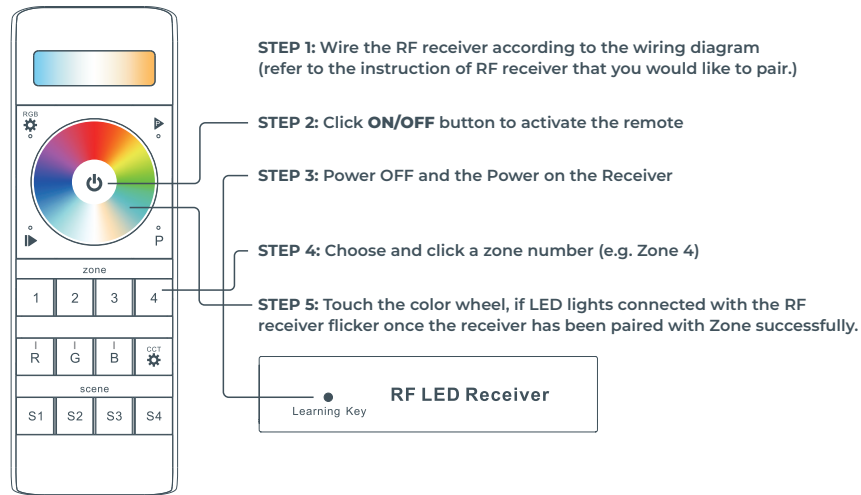
- Control 4 zones of RF receivers
- CCT Color Controller
- Highly sensitive, stable, fast, & precise color control
- Compatible with all universal series RF receivers
- 1 receiver can be paired by max. 8 different remote controls



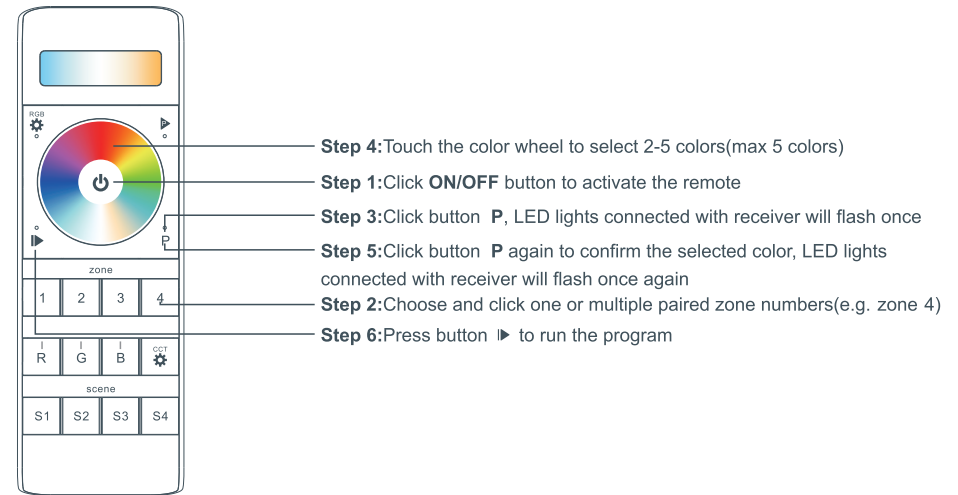
4.5V(3xAAA battery)

Copyright © 2026 aspectLED™

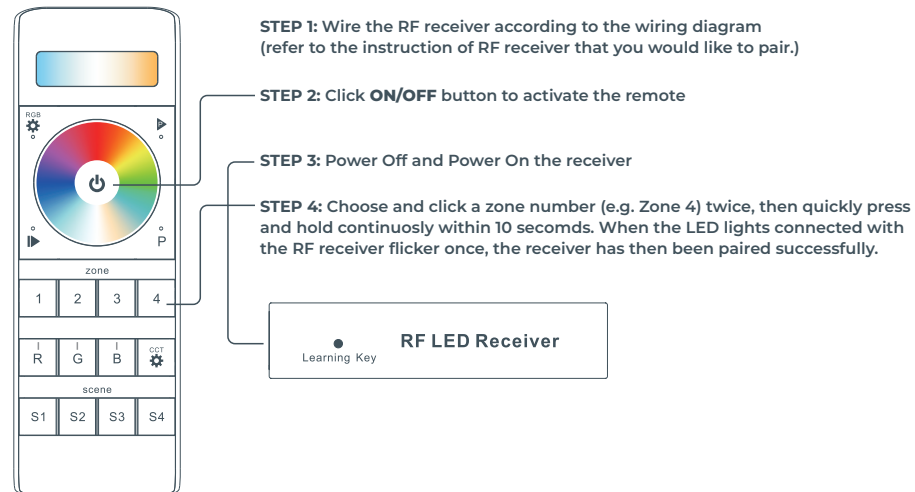
### Pair with RF receiver (Method 1)



### Program the Running Mode



### Pair with RF receiver (Method 2)



### If you use multiple receivers, you have two options:

Option 1: Have all the receivers in the same zone



Option 2: Have each receiver in a different zone



### How to stop running mode of single color LED light caused by RGBW sender interference:

1. When pairing single color LED light to a single color remote, it might be interfered and paired by nearby RGBW senders, which might control the single color light into running mode. The running mode can not be stopped by the paired single color remote or by delete pairing.
2. Then we need this remote, and pair the remote to the receiver via above "Pair with RF receiver(Method 2)", then touch the color wheel to stop the running mode.
3. Then delete pairing and pair the receiver to the single color remote again, it can be controlled by the remote again.